

B.C. Marine Parks Forever Society



World-class Cruising
Proudly supported by:



Allison Harbour

Octopus Islands

Desolation Sound

Princess Louisa Inlet

Harmony Islands

Musket Island

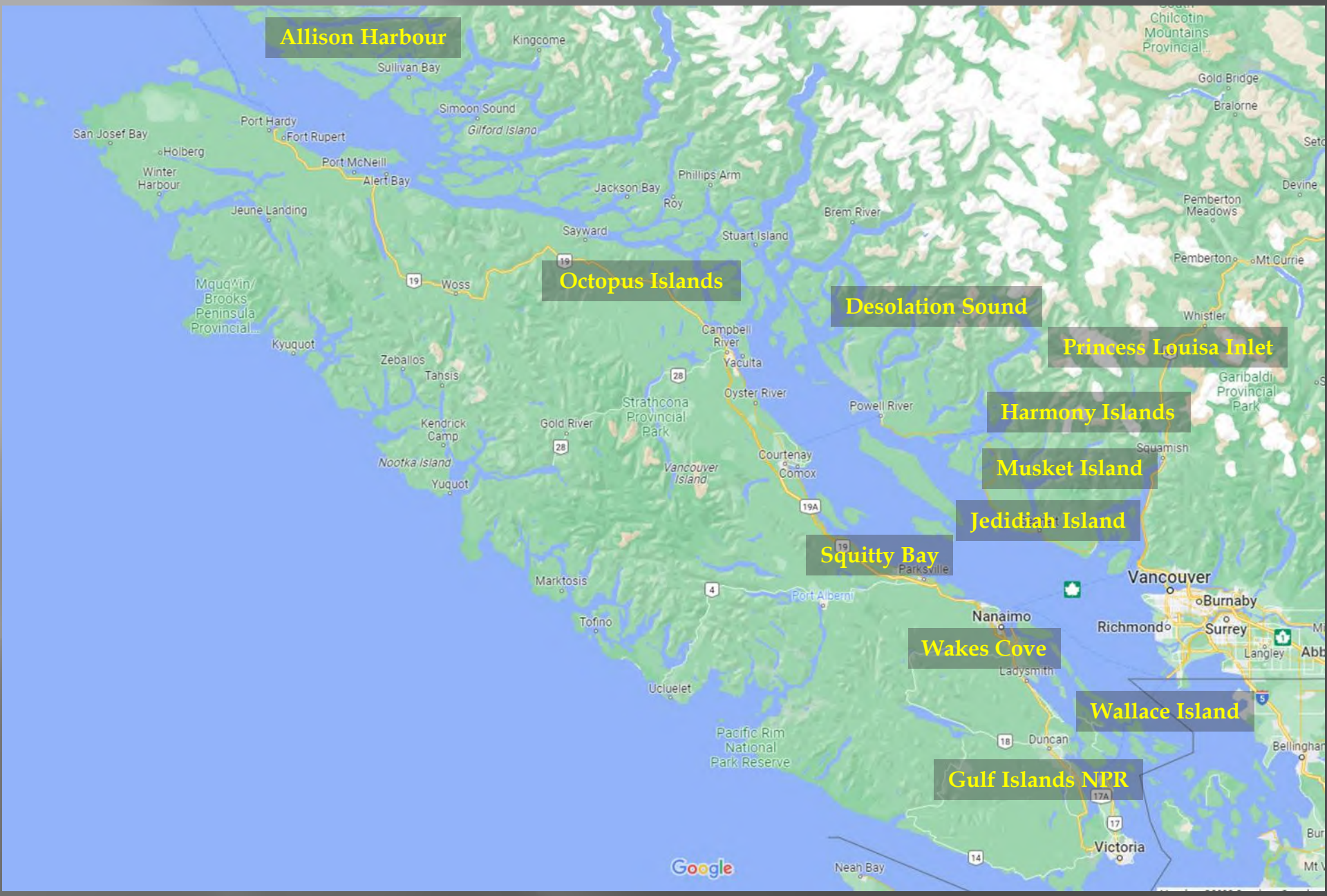
Jedidiah Island

Squitty Bay

Wakes Cove

Wallace Island

Gulf Islands NPR



Our Background

Founded by the Council of BC Yacht Clubs 1990

A not-for-profit society, recognized by CRA to issue tax receipts.

We work with BC Parks, BC Parks Foundation, Parks Canada and Regional Districts.

Boating organizations, (Yacht Clubs, Sailing Clubs, Co-ops)



Council of BC Yacht Clubs



BC Marine Parks Forever Society

The first Marine Park

1958 - Montague Harbour



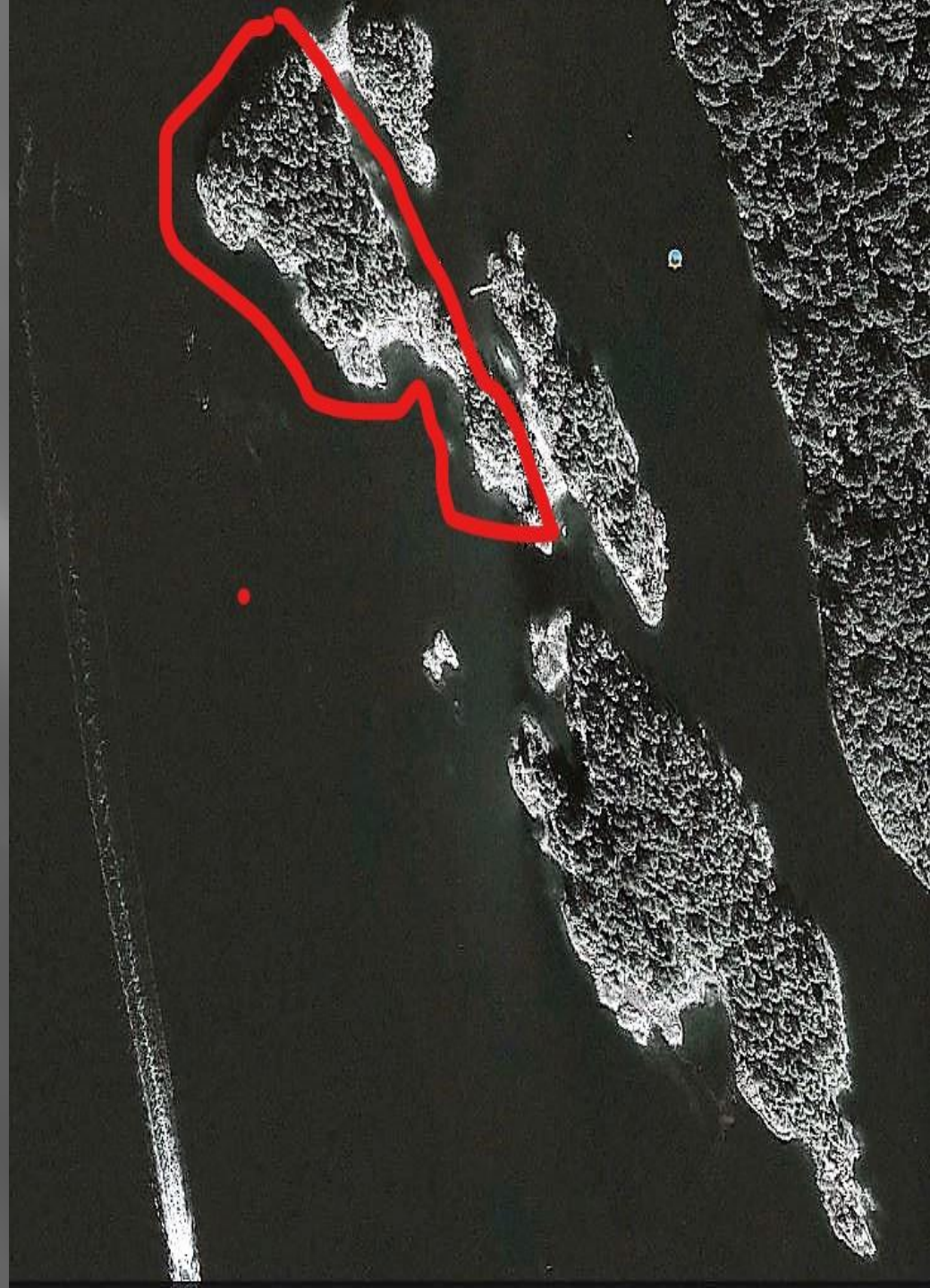
Our Purpose

- ▣ To expand and improve Marine Parks in BC. That is our SOLE focus.
- ▣ Over \$2.5 M expended to date. Our money is highly leveraged with other agencies and trusts.
- ▣ ALL volunteers from various yacht clubs in BC.
- ▣ NO office space and NO paid staff!
- ▣ Over 95% of contributions go to the cause.

Harmony Islands Marine Park

Additional
purchase in 2018

\$749,310



Jedediah Island

Legend

Jedediah Island.
\$100,000 - 2002

Google earth

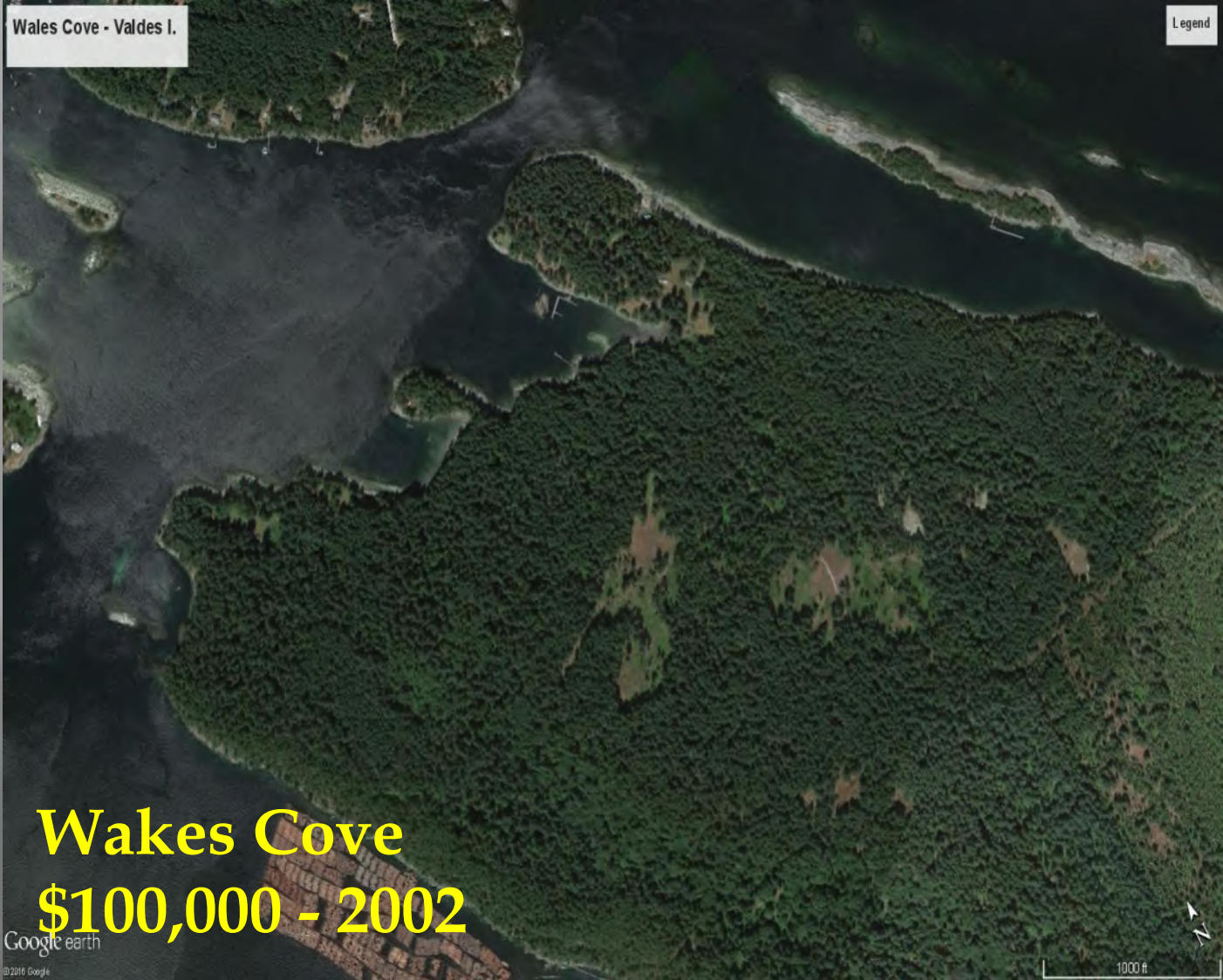
© 2016 Google
Imagery © 2016 DigitalGlobe

2000 ft



Wales Cove - Valdes I.

Legend



Wakes Cove
\$100,000 - 2002

Google earth
© 2010 Google

1000 ft

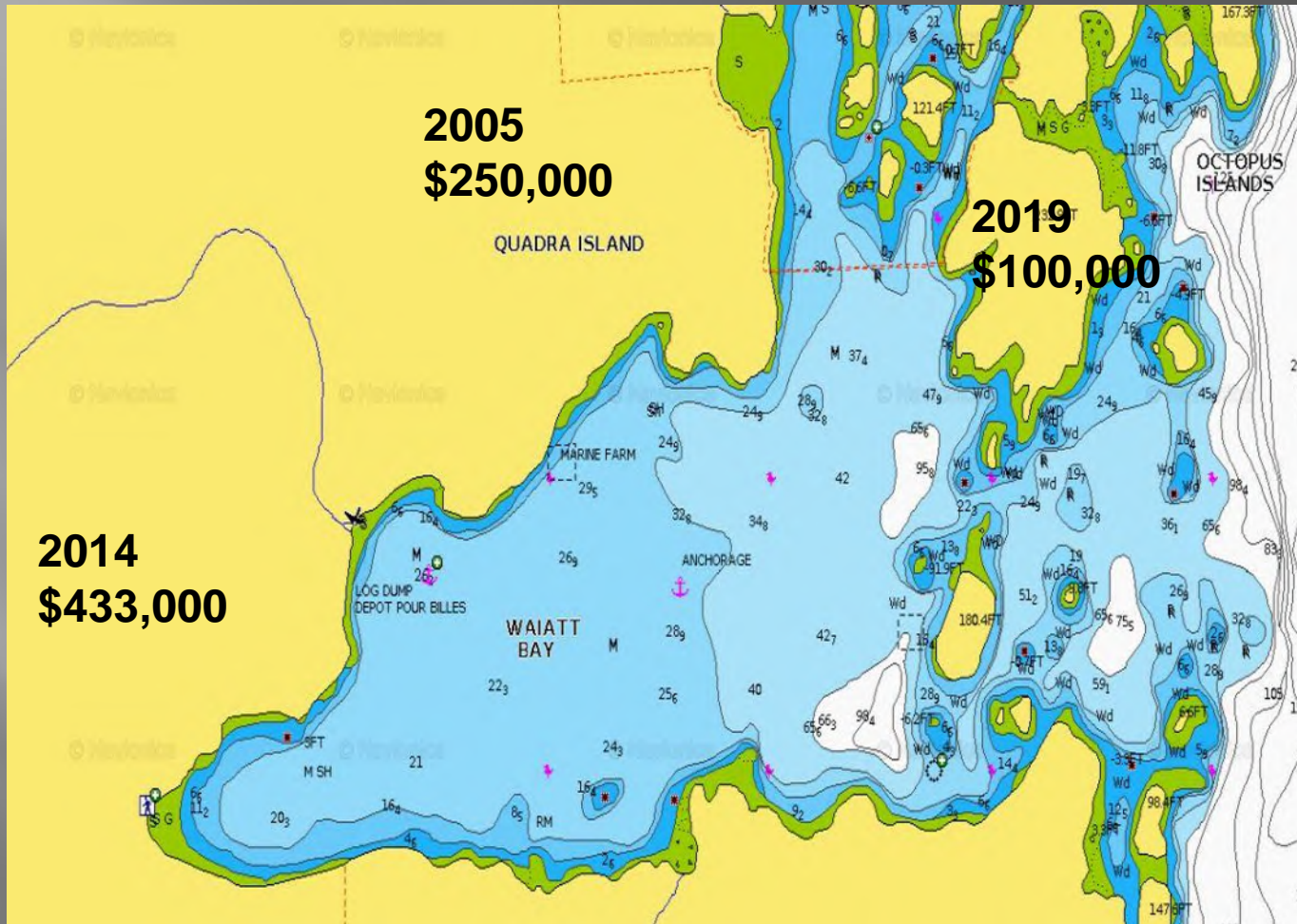


Allison Harbour

\$200,000 in 2007



Octopus Islands



Total donated

\$783,000

OUR FUNDING

- ▣ B.C. Yacht Clubs and members
- ▣ Conservation Trust Funds
- ▣ Private donations through our website
- ▣ Estate Legacies

DONATION SUMMARY

▣ Pirates Cove	13,000	1962
▣ Jedidiah Isl.	100,000	2002
▣ Musket Isl.	45,000	1991
▣ Hardy Isl.	75,000	2008
▣ Wakes Cove	100,000	2002
▣ Octopus Isl.	250,000	2004
▣ Allison Harbour	200,000	2007
▣ Squitty Bay	18,000	2009
▣ Octopus Isl.	433,000	2014
▣ Harmony Island	749,310	2018
▣ Princess Louisa	50,000	2019
▣ S. Octopus Isl.	100,000	2019
▣ Ballenas Isl	50,000	2020
▣ Improvements	134,373	2015-19
▣ Saturna Island	200,000	2025
▣ Total	2,517,683	



Oyster shells, slippery rocks...

We've all done this.

**MUCH BETTER!
CONVENIENT
SAFER ANCHORING**



RECENT STERN TIE PROJECTS

Jedediah Island replaced 17 worn chains, several pins and added high visibility markers to each site.

Bute Island Installed 8 new stern ties complete.

Wallace Island replaced 3 and added 2 new stern ties



Stern Tied at Princess Cove

Challenges

- ▣ Popular anchorages are heavily used, and more boats are on the water each year.
- ▣ Desirable waterfront is in limited supply and increasingly expensive.
- ▣ BC Parks has conflicting priorities: Acquisition & maintenance money is stretched.
- ▣ Most stern tie additions and updates have been delayed pending First Nations consultations.

Teaming: BC Parks Foundation

- Province of BC biodiversity fund \$150m
- Wilson 5 Foundation \$100m

Princess Louisa Inlet expansion

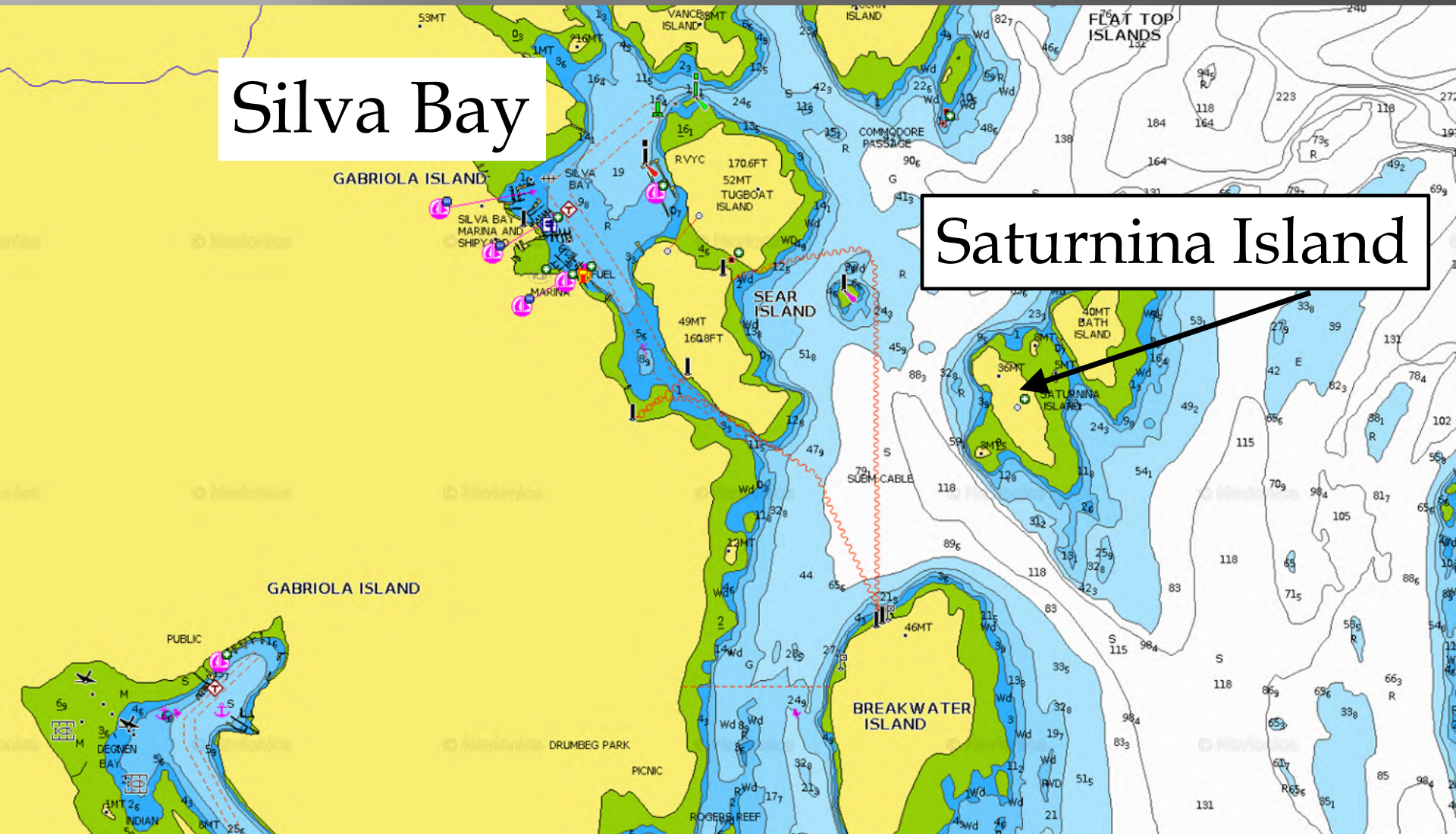
\$50,000 in 2019



Saturnina

Silva Bay

Saturnina Island



Flat Top Islands



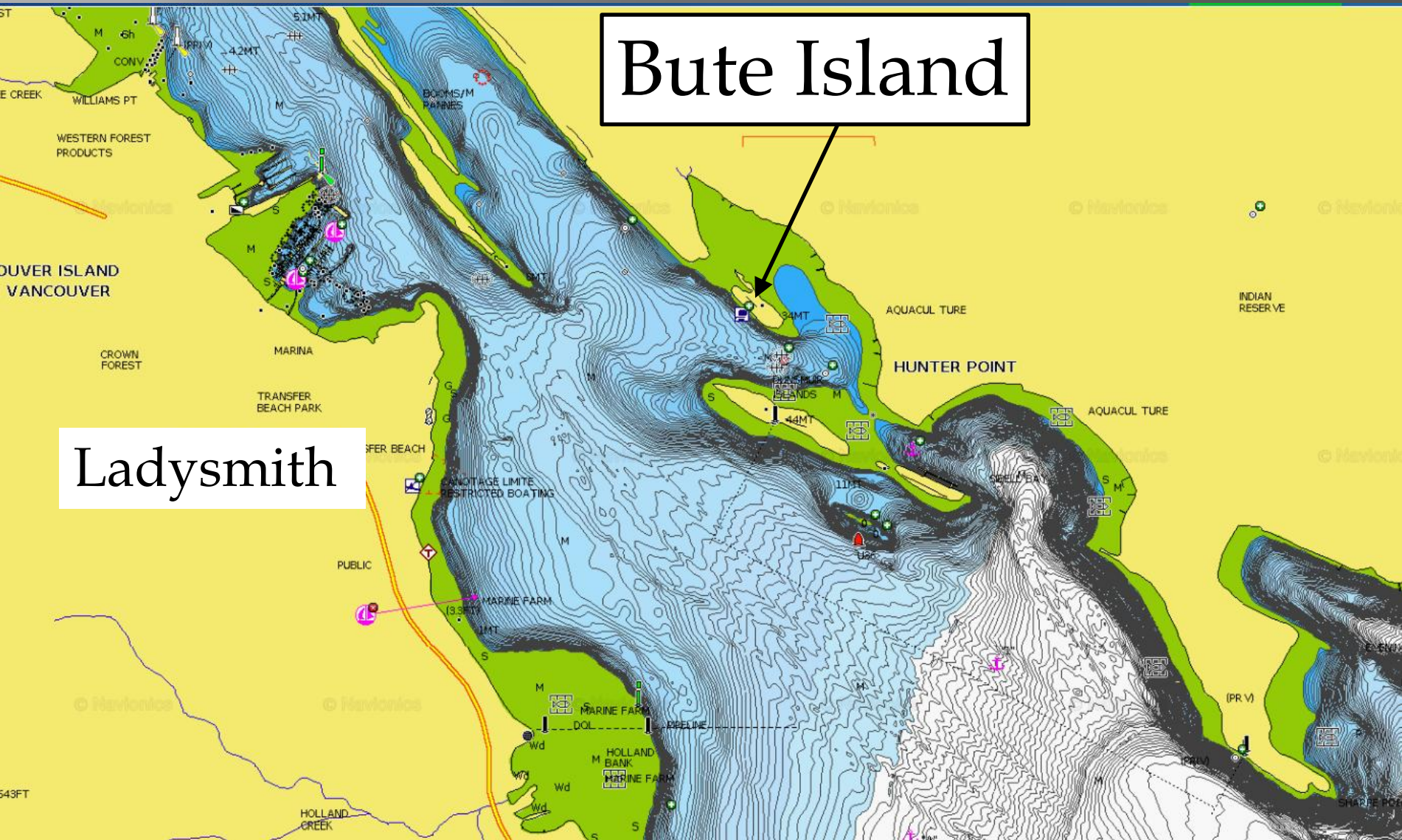
**Saturnina Island - protected,
forever.**

Regional District Parks

- Bute Island in Ladysmith Harbour is a good model
- We funded eight stern ties
- We're pitching to other regional districts

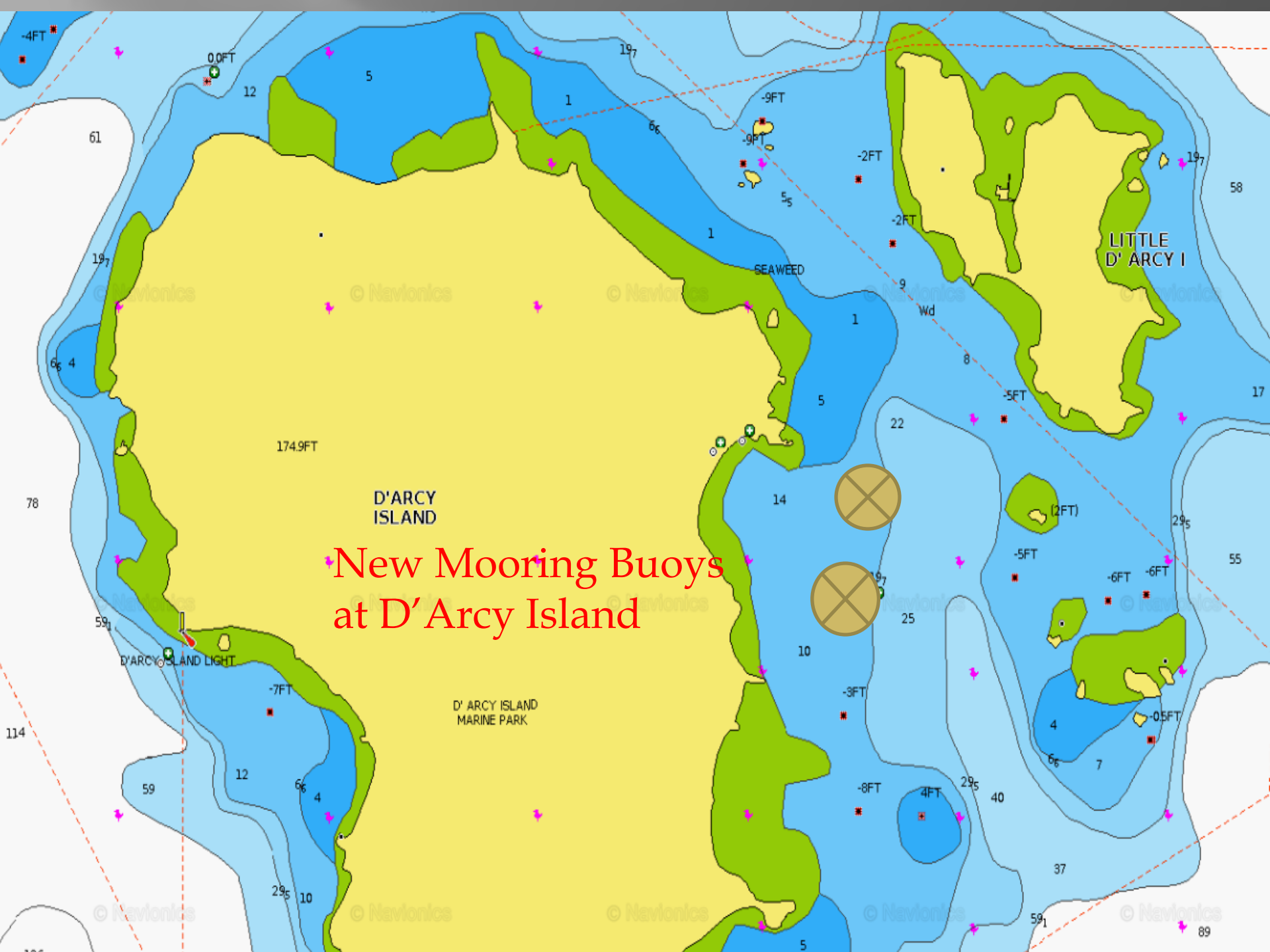
Bute Island

Ladysmith



Parks Canada: Federal Marine Parks

- New mooring buoys at D'Arcy Island
- Looking at new stern ties for other npopular anchorages
- Saturna Island +372 acres
+3km of shoreline



**New Mooring Buoys
at D'Arcy Island**

D'ARCY ISLAND

LITTLE D'ARCY I

D'ARCY ISLAND LIGHT

D'ARCY ISLAND MARINE PARK

SEAWEED

61

12

5

1

197

66

-9FT

-9FT

-2FT

-2FT

197

58

197

66

174.9FT

1

5

9

8

-5FT

17

78

14

22

(2FT)

295

55

New Mooring Buoys
at D'Arcy Island

59

D'ARCY ISLAND LIGHT

-7FT

D'ARCY ISLAND MARINE PARK

10

25

-5FT

-6FT

-6FT

295

114

59

12

66

4

D'ARCY ISLAND MARINE PARK

-3FT

-8FT

4FT

295

40

4

66

7

-0.5FT

37

59

© Navionics

89



Saturna Island – Eastern End

SATURNA

IR

Fiddlers C

(11)

Narvaez Bay

ISLAND

Monarch Hd

Bruce Bight

Taylor Pt

Java Its

Location: Southern Gulf Islands

Size: 372 acres

Cost: \$5,080,000

First Nation Territory: W'SANEC; Tsawwassen

BEC Zone: CDFmm

Cost per Acre: \$13,634



Connections

- ▣ Park Host Program – park superintendents
- ▣ BC Marine Trails – relations with First Nations
- ▣ Princess Louisa International Society
- ▣ Gulf Islands National Park Reserve

Club Contributions

- ▣ 2021 \$61,000
- ▣ 2022 \$67,000
- ▣ 2023 \$41,000
- ▣ 2024 \$60,000 Thanks, RVicYC!

SUMMARY

- ▣ MPFS is an enduring cruising investment.
- ▣ MPFS has extremely low overhead and leverages its funds for maximum effect.
- ▣ Marine Parks are great value and inexpensive for us to enjoy.
- ▣ Think of a side trip to Musket Island, Harmony Islands and Princess Louisa on your way to Desolation Sound.

QUESTIONS?



Go to:

<https://www.bcmpfs.ca/>



**Your club's support
for our parks greatly
appreciated!**